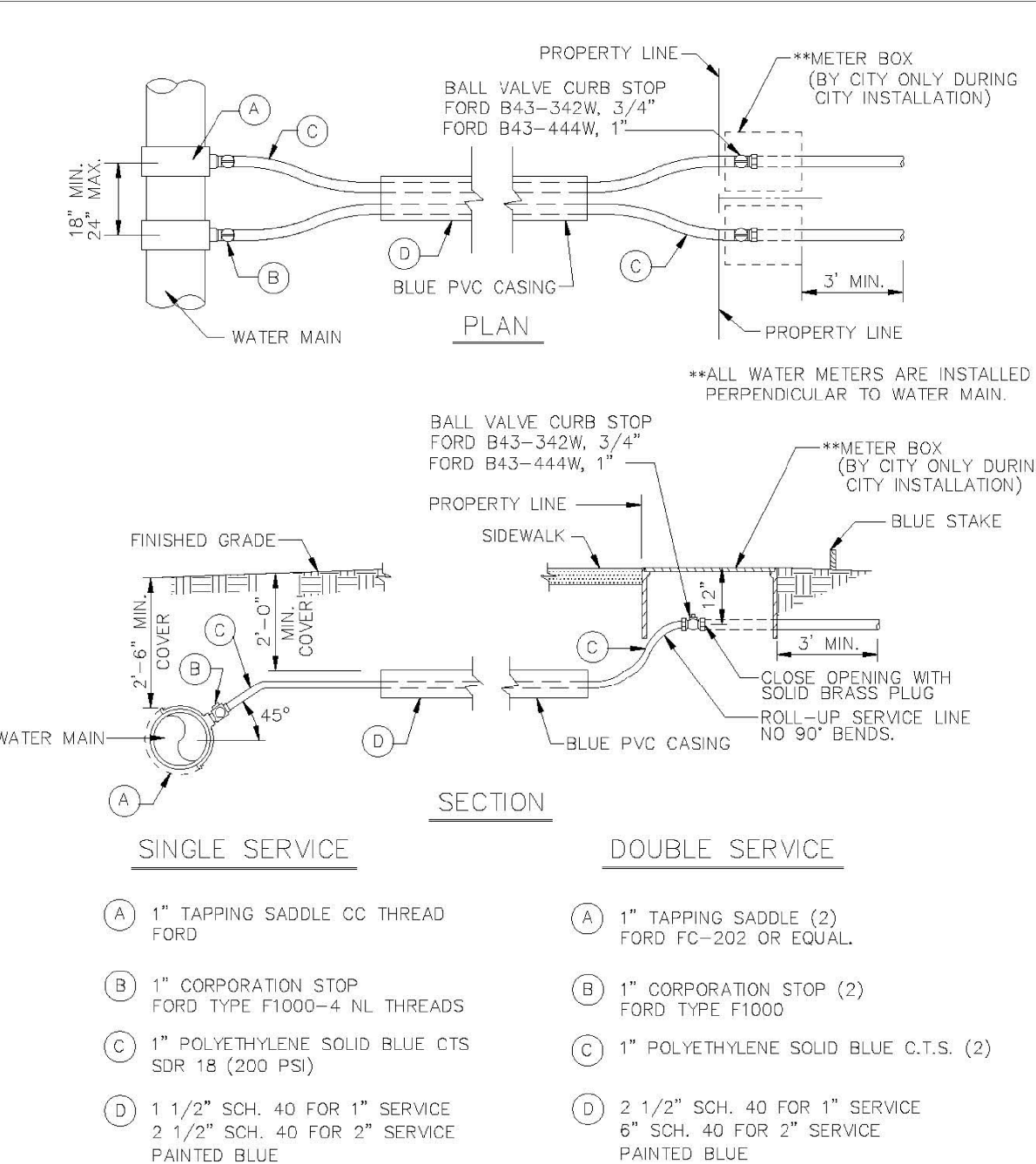


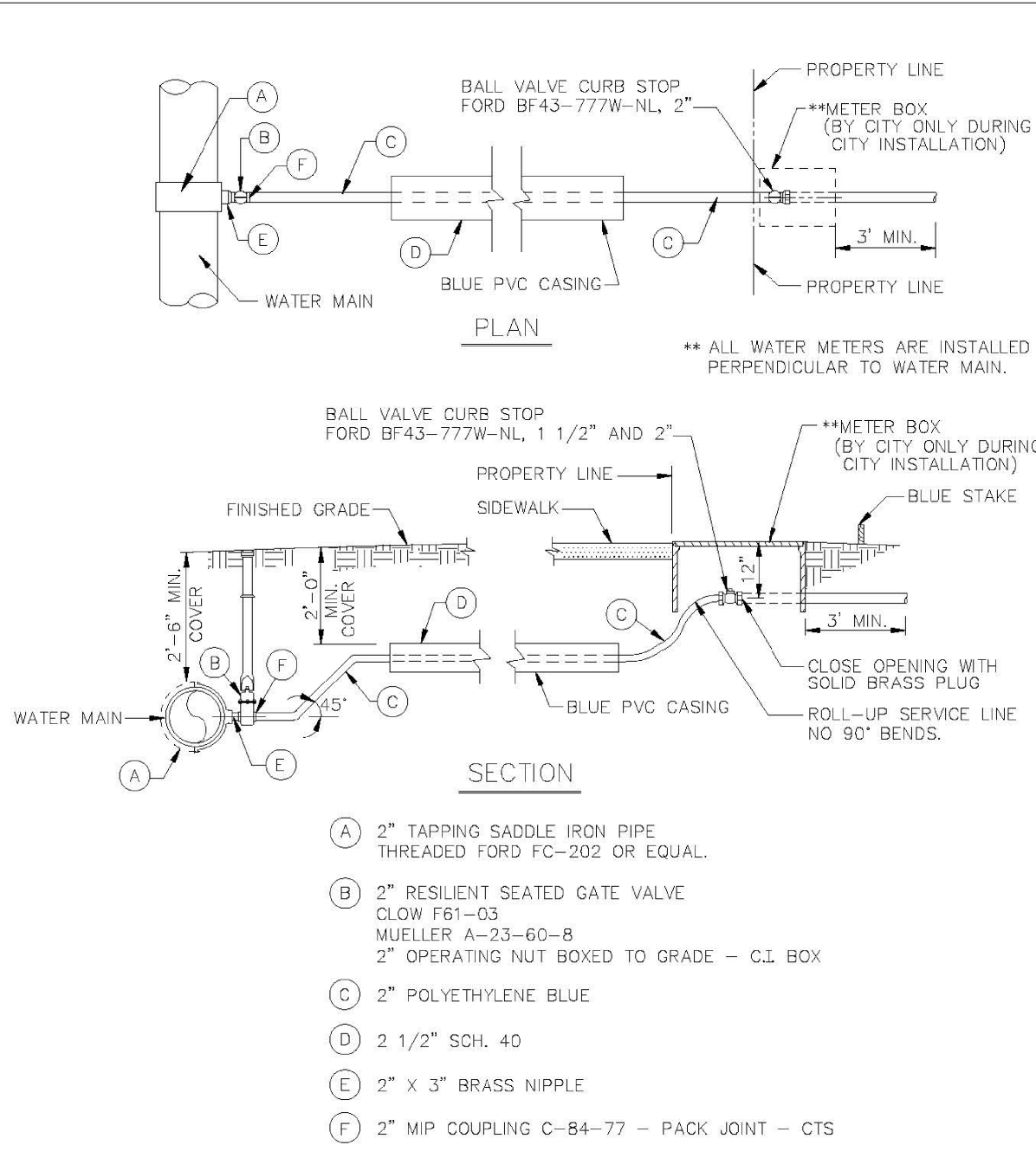
FIRE METERS - OS & Y VALVES, GASKETS & METER							
(NEPTUNE MACH 10 Ultrasonic Meter)							
SIZE	VALVES (2)	GASKETS (4)	METER w/ Strainer	TOTAL LENGTH			
3" w/ 4" X 3" Reducer **	16"	1/2"	30" **	46 1/2"			
4"	18"	1/2"	27 1/2"	46"			
6"	21"	1/2"	33"	54 1/2"			
8"	23"	1/2"	30"	53 1/2"			
10"	26"	1/2"	41"	67 1/2"			
FIRE &/or Domestic Water SERVICE METERS - TEES, OS & Y VALVES, GASKETS & METERS							
(NEPTUNE MACH 10 Ultrasonic Meter)							
SIZE	TEES (2)	VALVES (2)	GASKETS (8)	Meter w/ Strainer	TOTAL LENGTH		
3" w/ 4" X 3" Reducer **	3" X 3" - 22"	16"	3/4"	30" **	68 3/4"		
4"	4" X 3" - 26"	18"	3/4"	27 1/2"	72 1/4"		
6"	6" X 4" - 32"	21"	3/4"	33"	86 3/4"		
8"	8" X 4" - 36"	23"	3/4"	30"	89 3/4"		
10"	10" X 6" - 44"	26"	3/4"	41"	111 3/4"		

NOTE:
PLEASE NOTE THAT WATER METERS 3" AND LARGER ARE SUBJECT TO AN APPROXIMATE ORDER LEAD TIME OF 60 TO 75 BUSINESS DAYS AFTER FULL PAYMENT. PLEASE CONTACT CUSTOMER SERVICE AT 954-786-4637 TO ARRANGE FOR METER PROCUREMENT AND INSTALLATION. LARGE METERS MUST BE AT MINIMUM ORDERED PRIOR TO INITIAL INSPECTIONS.

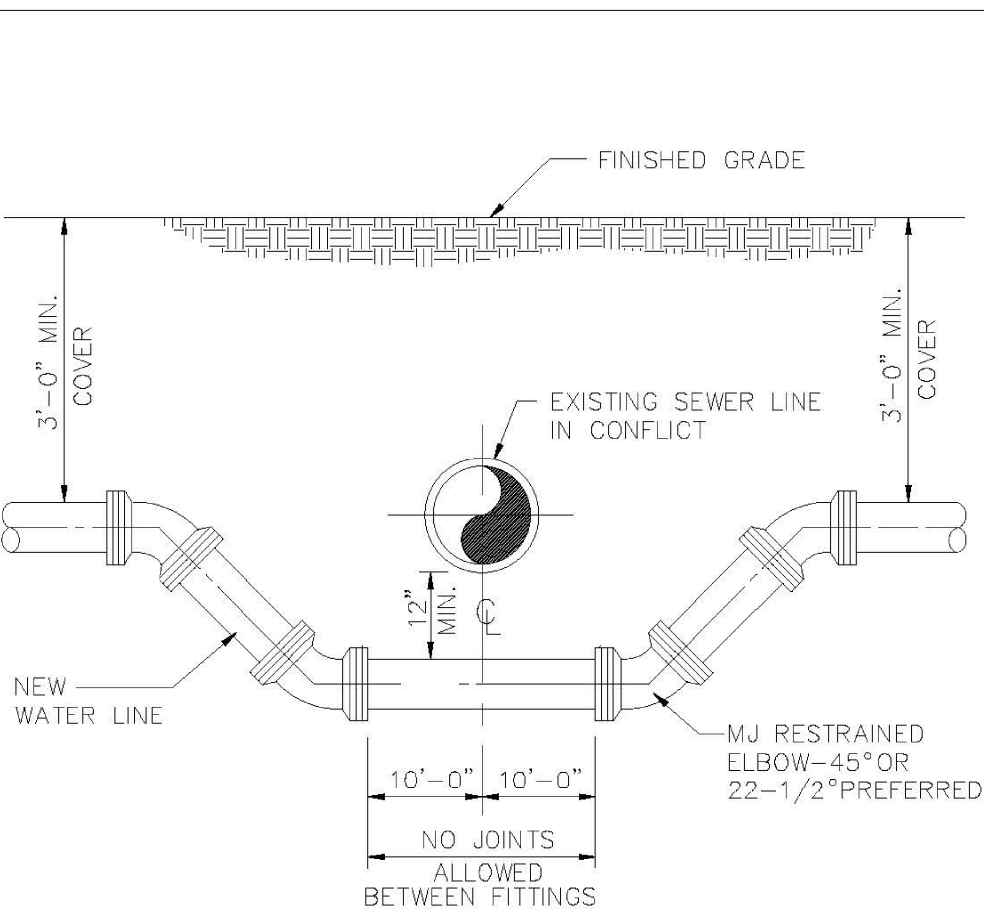
REVISIONS		ENGINEERING DIVISION CITY OF POMPAÑO BEACH	METER INSTALL DIMENSION LIST	
BY	DATE		<div>DATE: JAN. 2022</div> <div>DWG. NO. 106-4</div>	
T.W.	02-2008			
S.S.	11-2016			
A.S.	01-2022			
SCALE: N.T.S.				



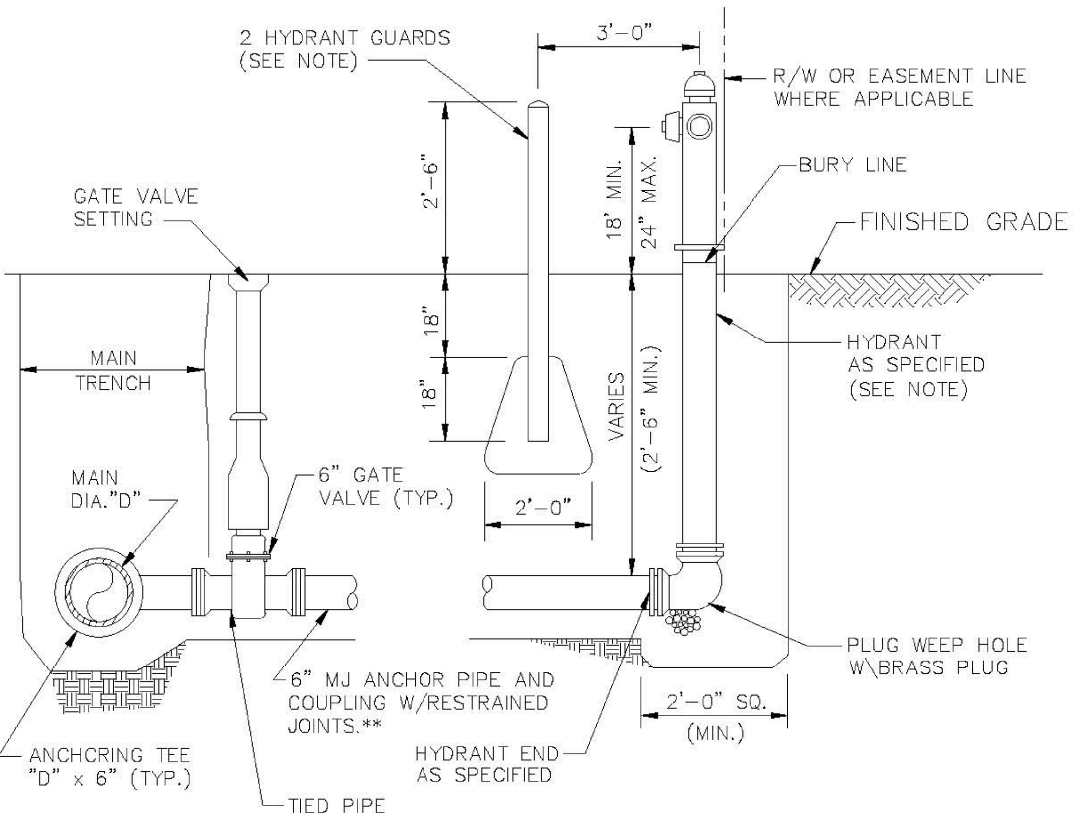
REVISIONS		ENGINEERING DIVISION CITY OF POMPANO BEACH	TYPICAL 1" WATER SERVICE	
NO.	DATE			
1	11-2007		DATE: <u>MAY 2022</u> DWG. NO. 107-1	
2	05-2012			
3	11-2015			
4	08-2021			
SCALE: N.T.S.				



REVISED		<div>ENGINEERING DIVISION</div> <div>CITY OF POMPAÑO BEACH</div>		TYPICAL 2' WATER SERVICE	
BY	DATE			<div>DATE: APRIL 2022</div> <div>DWG. NO. 107-2</div>	
S.S.	05-2011				
S.S.	05-2012				
S.S.	11-2018				
A.S.	08-2021	SCALE: N.T.S.			



REVISIONS		ENGINEERING DIVISION CITY OF POMPANO BEACH	TYPICAL CONFLICT (WATER)	
BY	DATE			DATE: MAY 2022 DWG. NO. 108-1
S.S.	04-2005			
S.S.	01-2012			
SCALE: N.T.S.				



NOTES

HYDRANT GUARDS TO BE 6" DIAMETER GALVANIZED STEEL PIPE PAINTED YELLOW
FILLED WITH CONCRETE. OMIT GUARDS IN LOCATIONS WHERE SIDEWALKS EXIST.

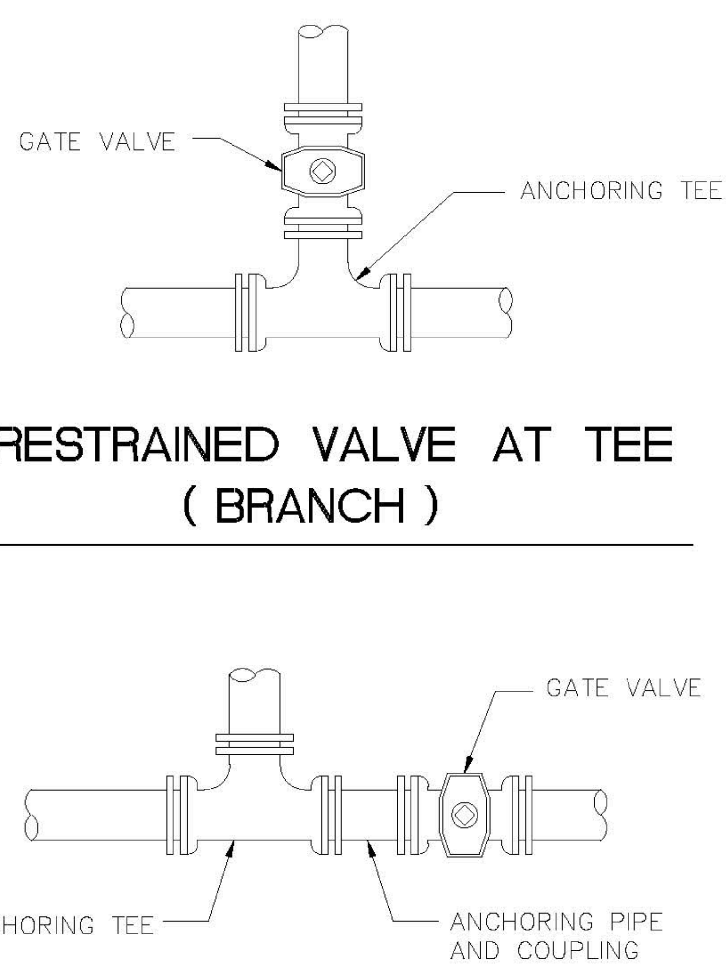
*USE 2-3/4" S.S. TE. RODS WHEN DISTANCE BETWEEN MAIN AND
HYDRANTS WILL BE 10'. TE RODS WILL BE USED W/RESTRAINED JOINTS OR
USE MEGALUGS AT ALL PIPE JOINTS

HYDRANTS INSTALLED ON EXISTING WATER MAINS MUST USE A MUELLER
MJM DI TAPPING SLEEVE, H-615 OR APPROVED EQUAL.

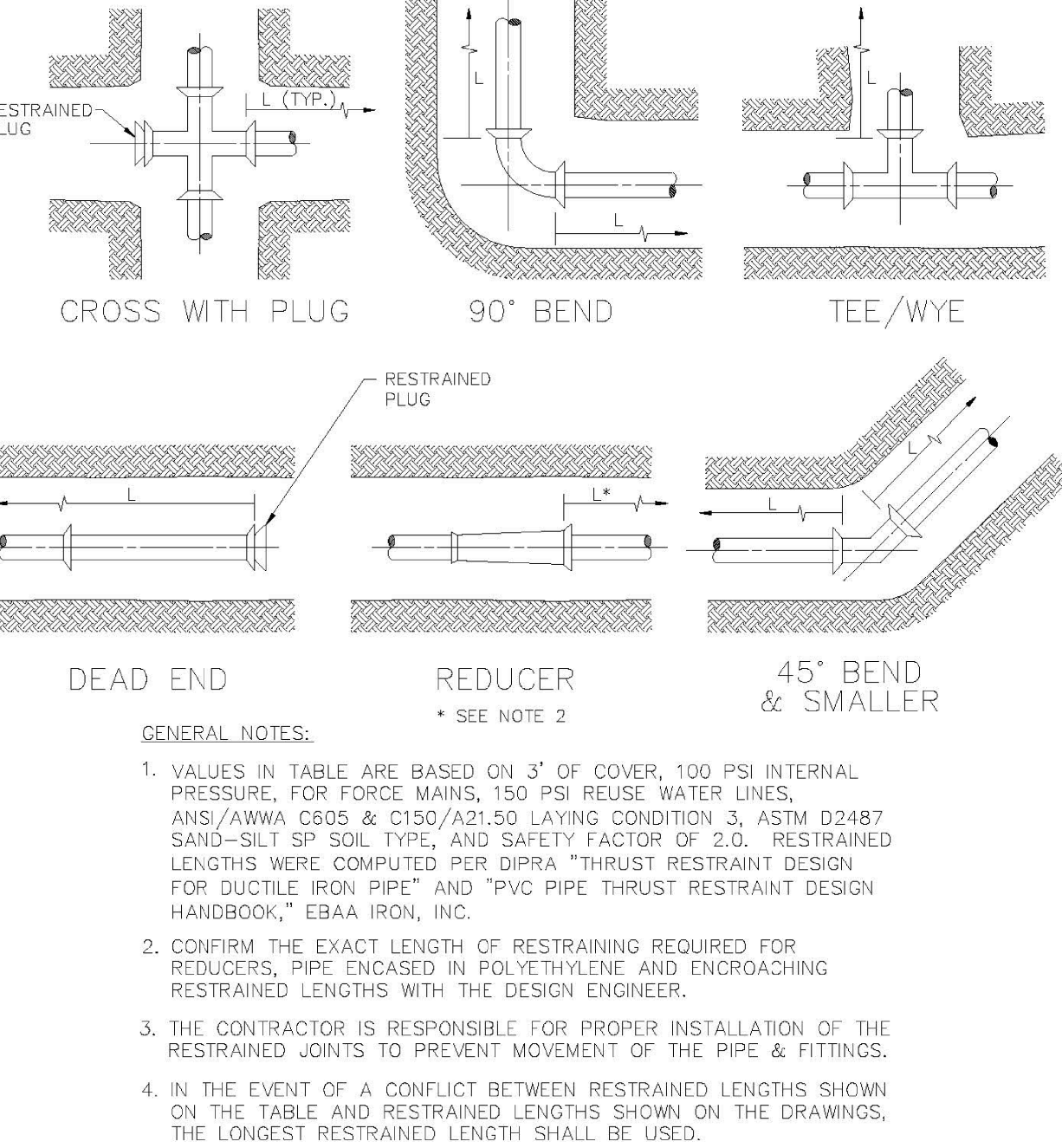
HYDRANTS CONNECTED TO NEW MAINS SHALL BE CONNECTED USING A
HYDRANT TEE.

ALL POWPANO BEACH HYDRANTS SHALL BE PAINTED RED.

REVISIONS		FIRE HYDRANT ASSEMBLY	
BY	DATE	ENGINEERING DIVISION CITY OF POMPAÑO BEACH	
T.W.	11-2037		
T.W.	10-2010		DATE: MAY 2022
S.S.	2-2012		DWG. NO.
S.S.	11-2012	SCALE: N.T.S.	109-1



REVISIONS		ENGINEERING DIVISION CITY OF POMPANO BEACH		RESTRAINED VALVE AT TEE	
DATE					
DATE	JUNE 2006				
		SCALE: N.T.S.			DATE: MAY 2022 DWS. NO. 111-1



REVISIONS		ENGINEERING DIVISION CITY OF POMPANO BEACH	RESTRAINED JOINT INFORMATION
BY	DATE		
SCALE: N.T.S.		DATE: MAY 2022 DWG. NO.	118-1



CITY OF POMPAÑO BEACH

STANDARD WATER DETAILS

PALM AIRE TENNIS CENTER

RWB / LINARES ARCHITECTURE